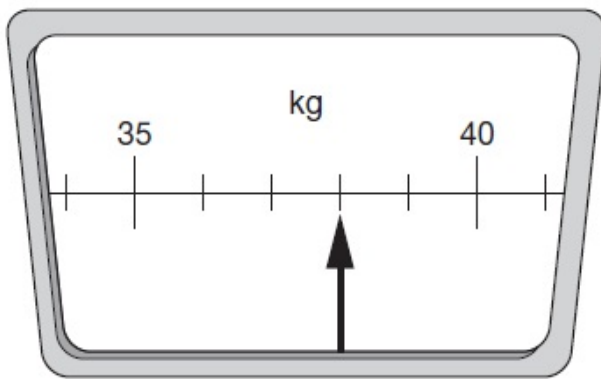


1.

This scale shows how much Chen weighs.



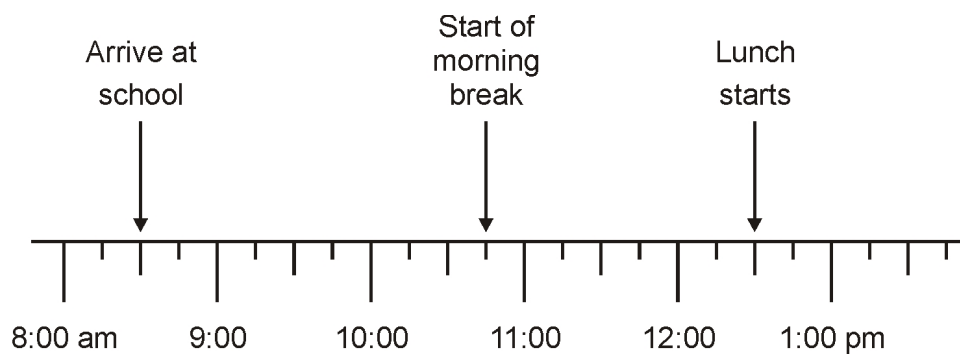
How much does Chen weigh?

 kg

1 mark

2.

Jamie makes a time line of part of his day.



What time does Jamie's morning break start?

 am

1 mark

Lunch lasts for three-quarters of an hour.

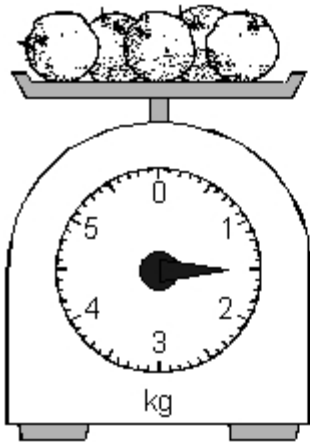
What time does lunch **finish**?

 pm

1 mark

3.

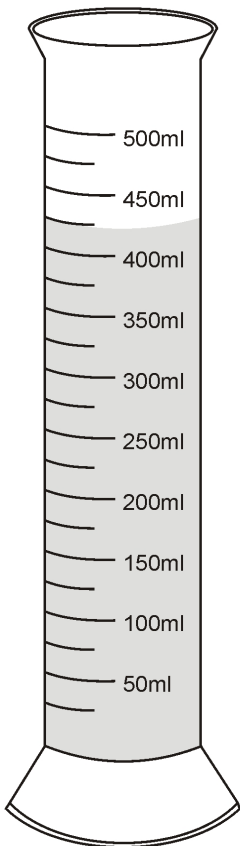
What is the total mass of these apples?



1 mark

4.

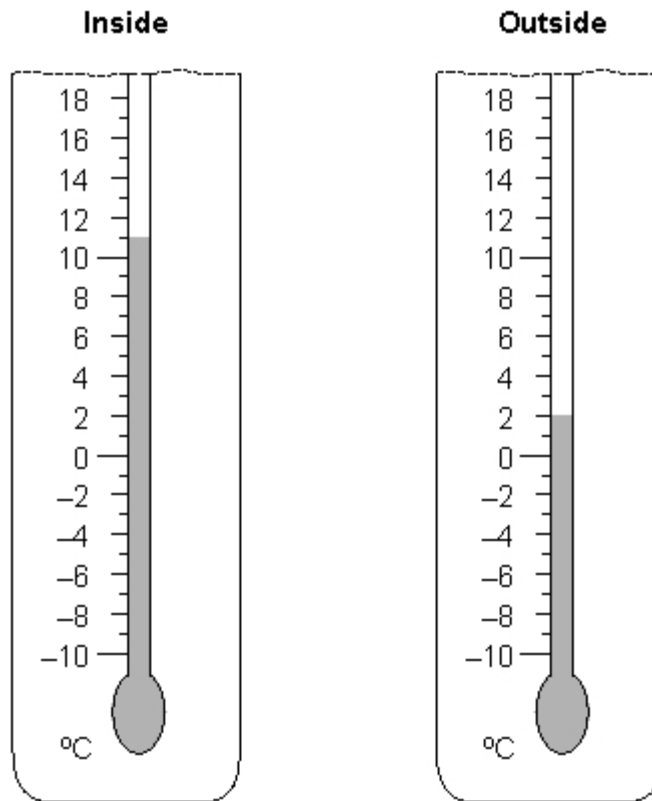
How much water is in this container?



1 mark

5.

Two thermometers show the temperature inside and outside a greenhouse on a day in January.



How many degrees **warmer** was it inside the greenhouse than outside?

°C

1 mark

Later the temperatures were

inside	outside
-1°C	-8°C

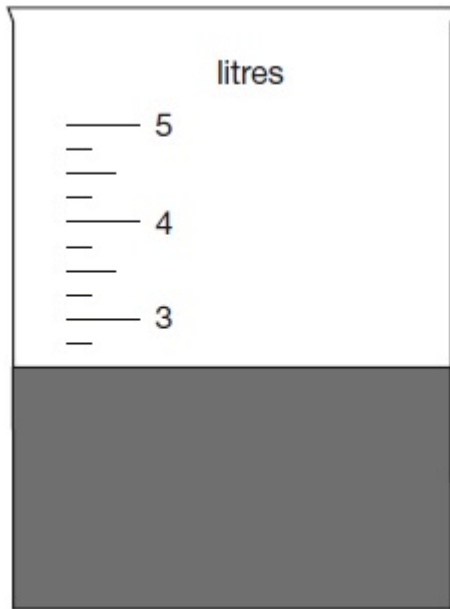
What is the difference between these two temperatures?

°C

1 mark

**6.**

Jack pours some dark paint into a container.

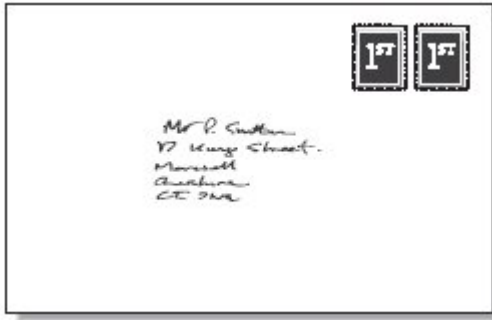


In litres, how much paint is in the container?

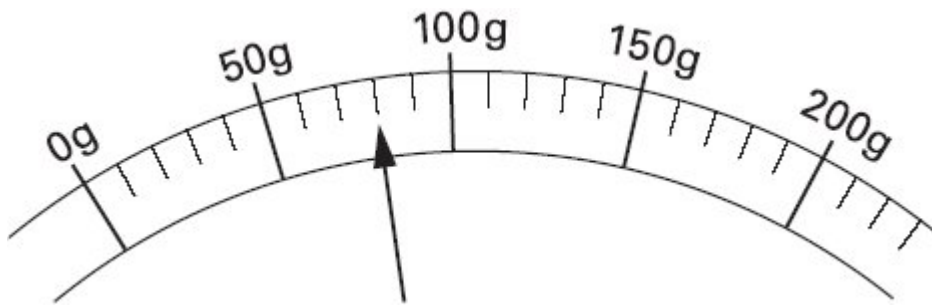
litres
--------

1 mark

7.



Here is a scale which shows the weight of a letter.



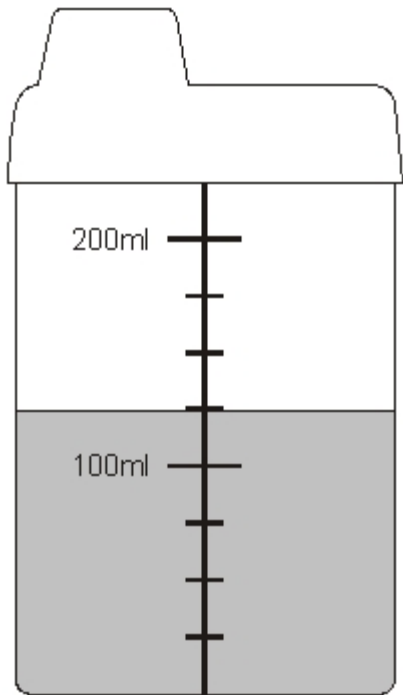
How much does the letter weigh?

 g

1 mark

8.

Here is a baby's drinking cup.



How many millilitres of water are in the cup?

 ml

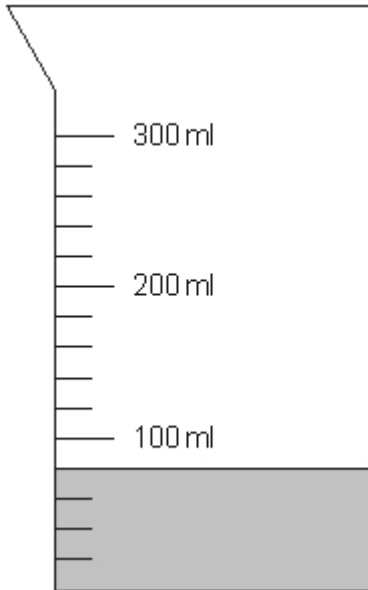
1 mark

9.

Hassan has a jug with some water in it.

He adds another 140 millilitres of water.

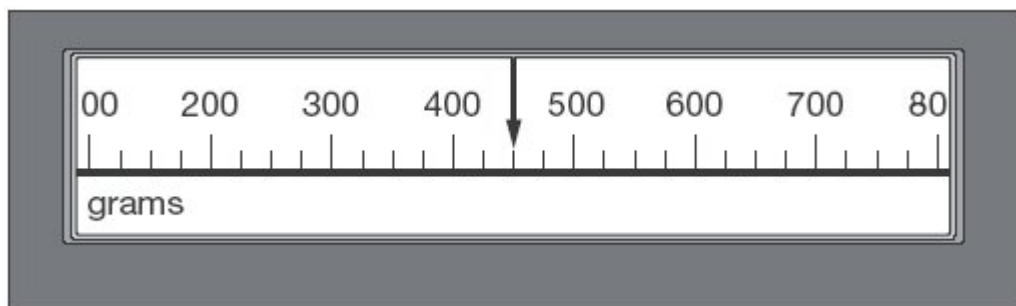
Draw a line to show the new level of water.



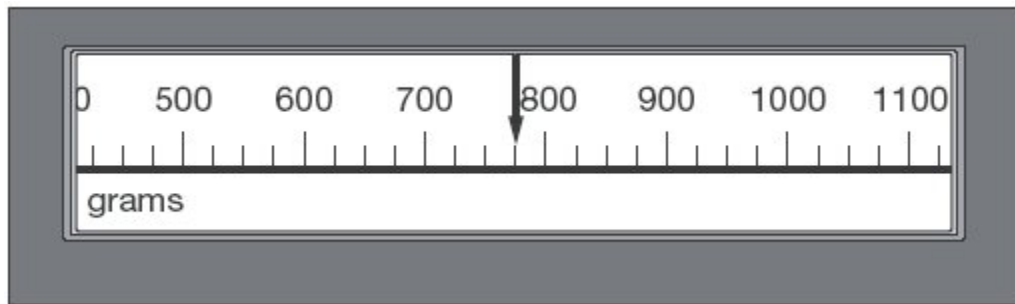
1 mark

10.

This scale shows the mass of Amy's kitten when it was one month old.



This scale shows the mass of the kitten when it was two months old.



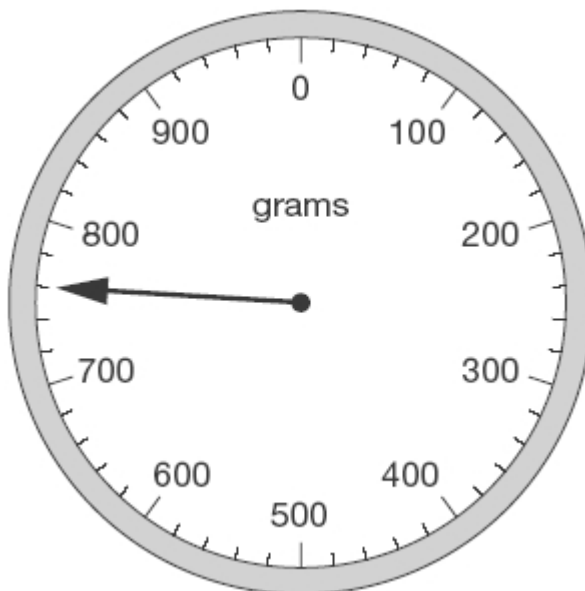
What is the increase in mass?

1 mark

11.

Joe places some apples on a weighing scale.

The pointer shows the mass of the apples.

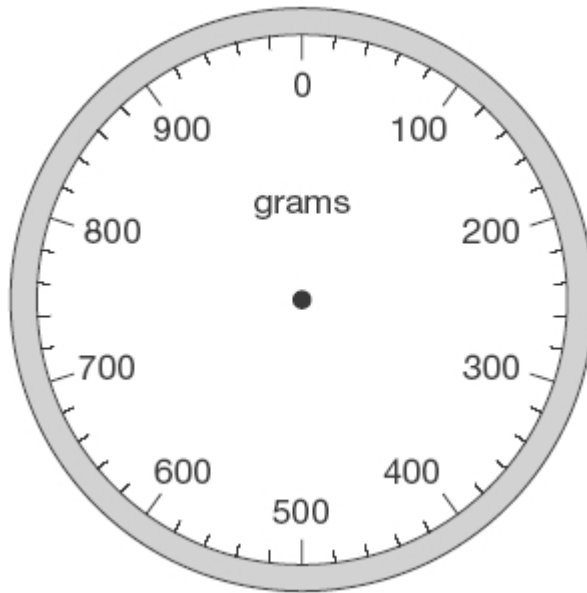




He takes away one apple.

The mass goes down by 120 grams.

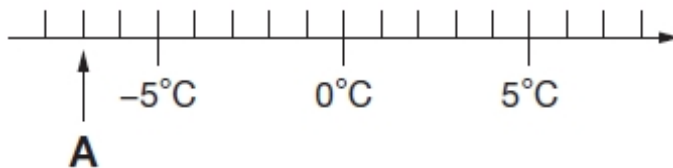
Draw the pointer in its new position on the scale below.



1 mark

12.

Here is part of a temperature scale.



What is the temperature shown at **A**?

1 mark

What temperature is 20 degrees **higher** than **A**?

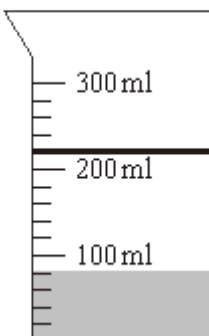
1 mark

## Mark schemes

1.	38			[1]
2.	(a) 10:45am	The answer is a specific time (see General guidance: responses involving time for guidance).	1	
	(b) 1:15pm	The answer is a specific time (see General guidance: responses involving time for guidance).	1	[2]
3.	1½ (kg) or 1.5(kg) or 1.500(kg) or one and a half (kg)			[1]
4.	425 (ml)			[1]
5.	(a) 9		1	
	(b) 7	Accept -7	1	[2]
6.	2.5 or $2\frac{1}{2}$			[1]
7.	80			[1]
8.	125			[1]

9.

Level of water indicated as shown:



Accept answers in the range 215 ml to 225 ml inclusive.

Accept: alternative unambiguous indications of the correct level, provided the intention is clear, eg container shaded.

[1]

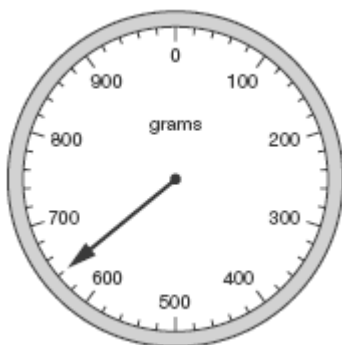
10.

325

[1]

11.

Arrow drawn to 640, as shown:



Arrow should be closer to 640 than to 620 or 660

Accept any unambiguous indication of the correct point on the scale, including an arrow not originating from the centre of the dial.

Accept answer given on upper diagram provided no answer is given on lower diagram.

[1]

12.

(a)  $-7^{\circ}\text{C}$

**Do not accept 7-**

1

(b)  $13^{\circ}\text{C}$

If (a) is negative allow follow through in part (b) for **ONE** mark.

1

[2]